

Panduan Instalasi SmartFren E781 Sebagai Modem



CATATAN!

- Di beberapa komputer, software antivirus ataupun firewall dapat mem-blok proses instalasi modem, pastikan antivirus dan firewall di non-aktifkan sementara sampai proses instalasi selesai.
- Pastikan Autorun di komputer aktif agar proses auto instalasi dapat berjalan. Apabila tidak aktif, proses bisa dilakukan secara manual.

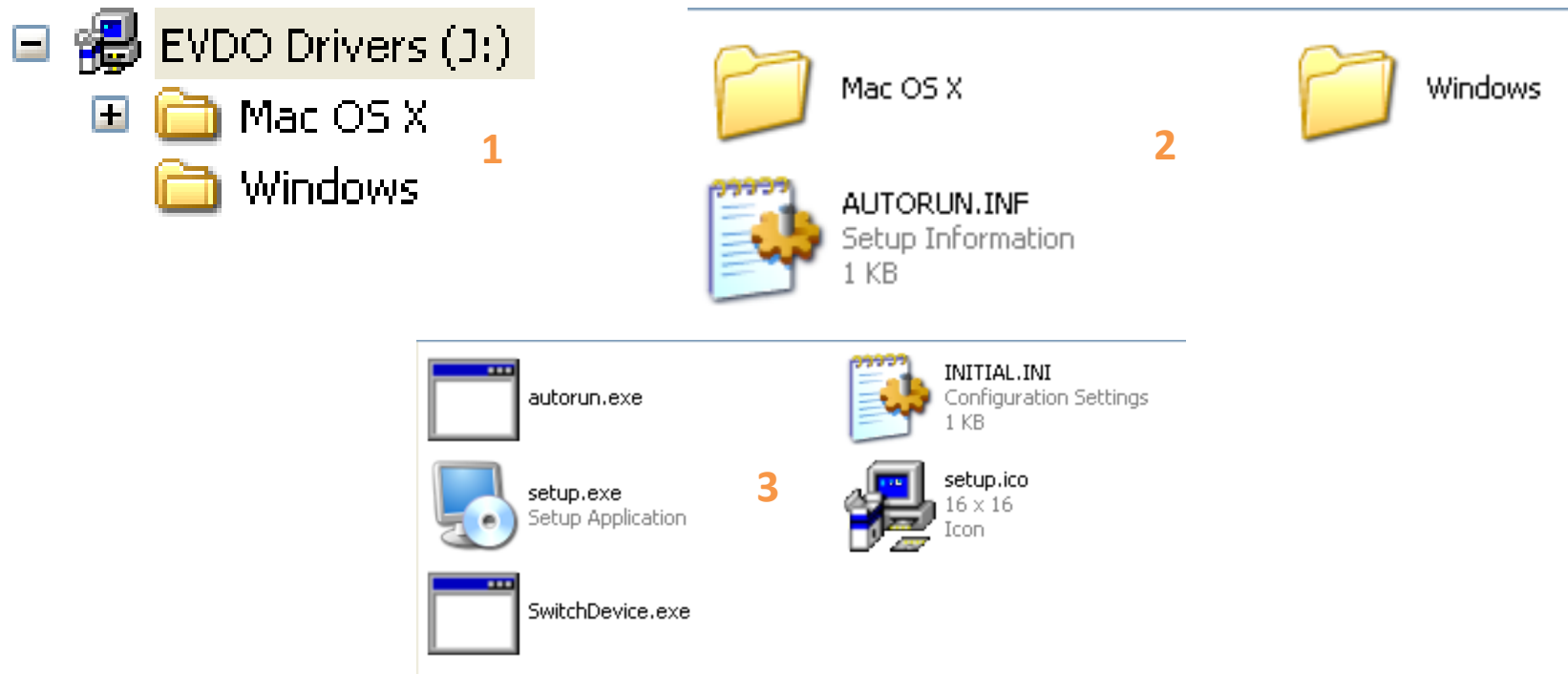


Proses Instalasi E781A



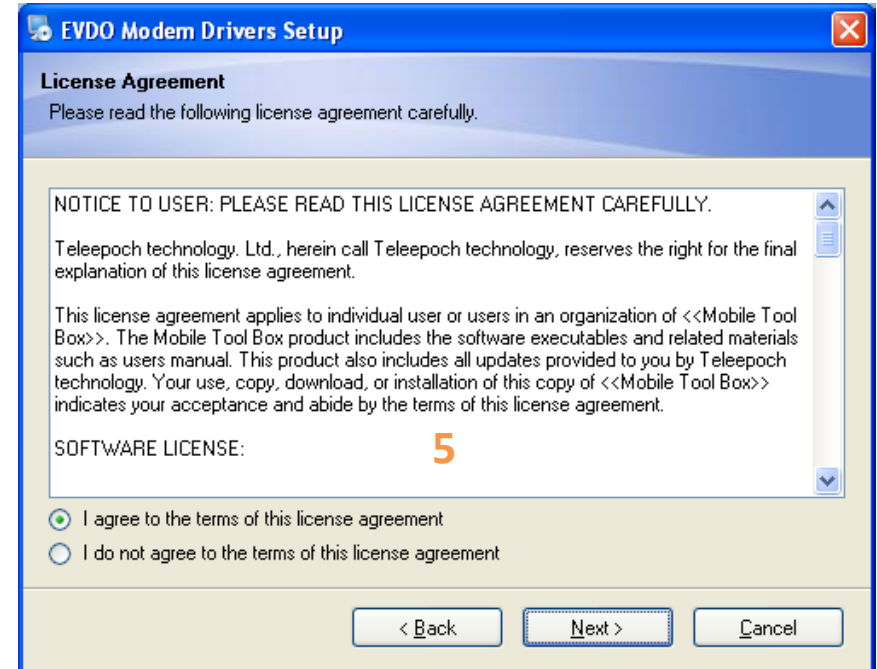
1. Hubungkan handset menggunakan kabel data Mini-USB ke port USB komputer/laptop, muncul tampilan notifikasi seperti diatas.

Proses Instalasi E781A



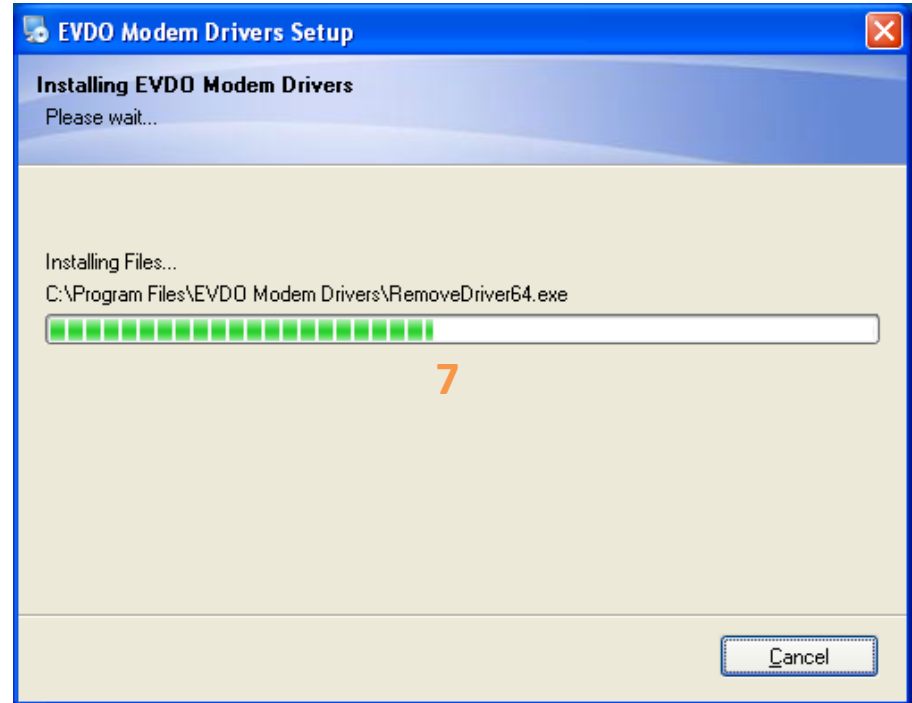
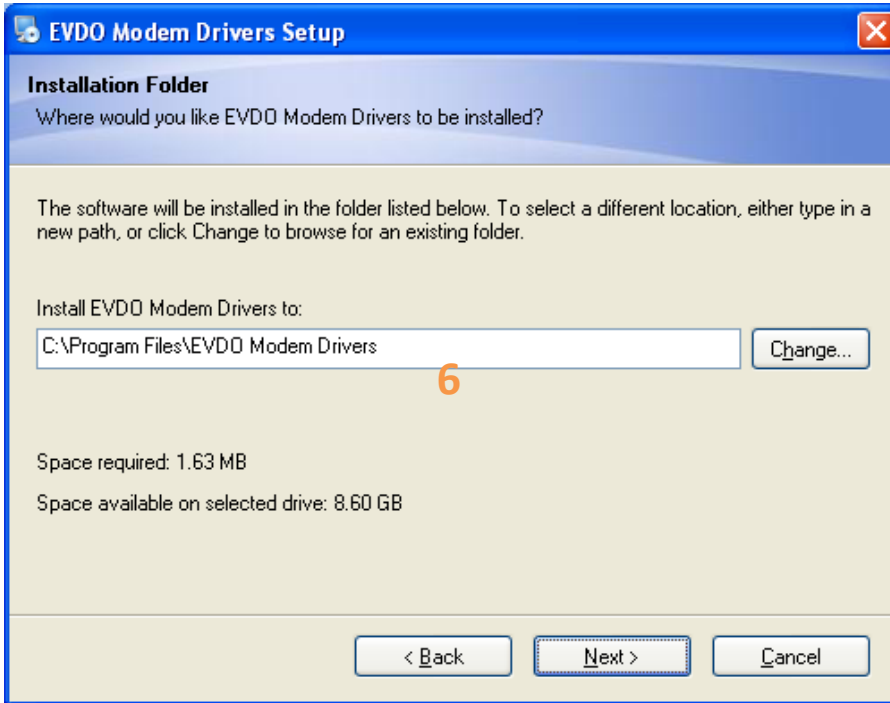
2. Apabila fungsi Autorun pada komputer enable maka proses instalasi akan berlangsung secara otomatis, apabila fungsi autorun disable maka instalasi dapat dilakukan secara manual.
3. Klik keterangan **EVDO Drivers**, pilih folder **Windows**, kemudian klik keterangan **setup.exe**

Proses Instalasi E781A



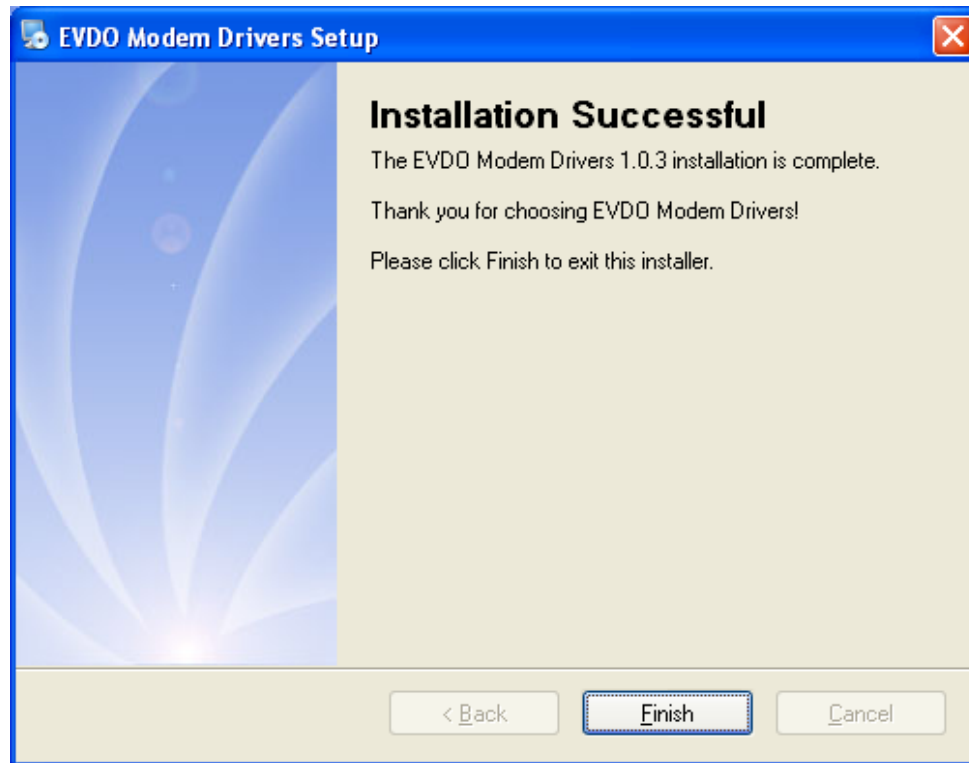
4. Muncul tampilan “Welcome to the installer for EVDO Modem Drivers 1.0.3”, klik Next >
5. Muncul tampilan “License Agreement”, pilih keterangan “ I agree the terms of this license agreement. Klik Next >

Proses Instalasi E781A



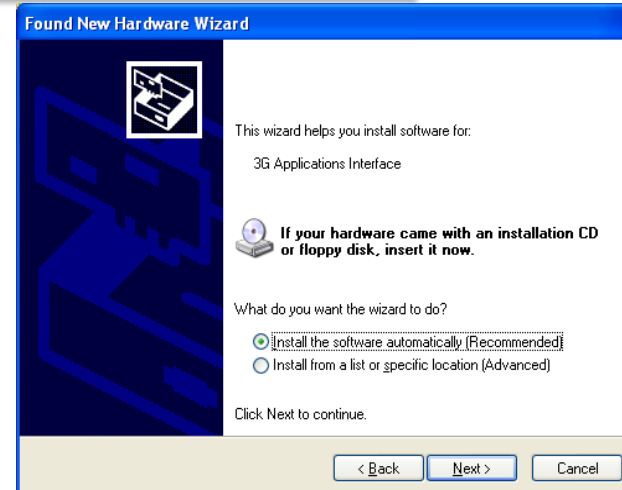
6. Muncul tampilan “Installation Folder”, klik Next >
7. Proses instalasi sedang berjalan

Proses Instalasi E781A



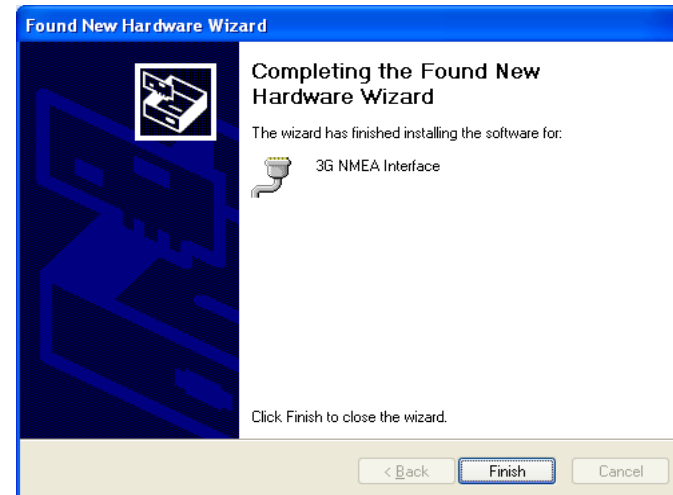
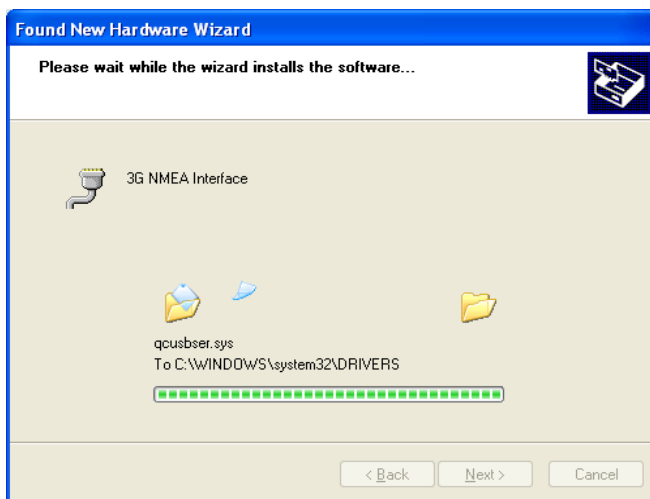
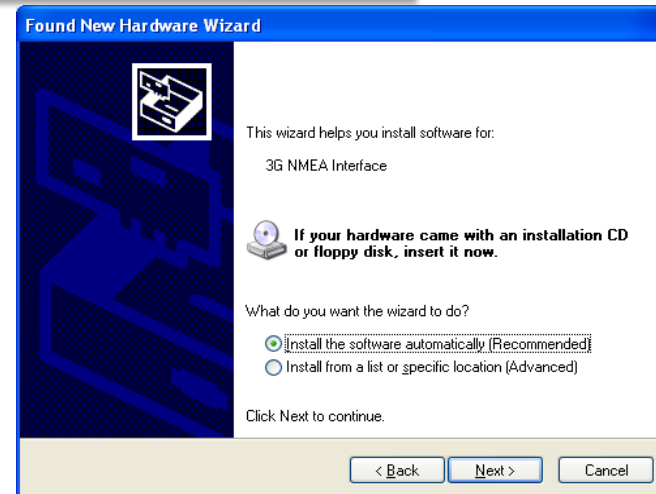
8. Proses instalasi selesai, klik Finish

Proses Instalasi E781A



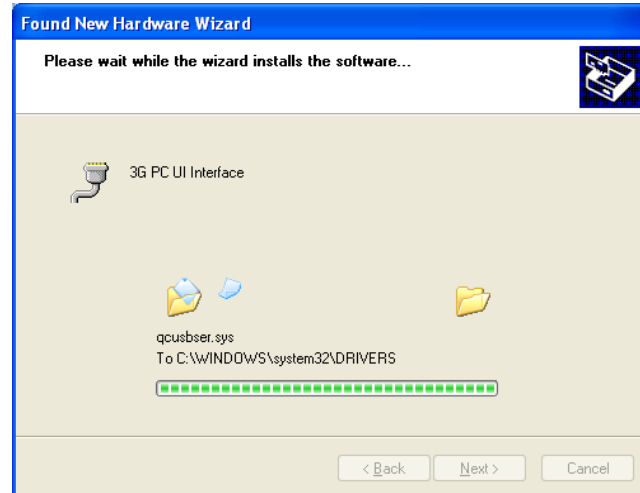
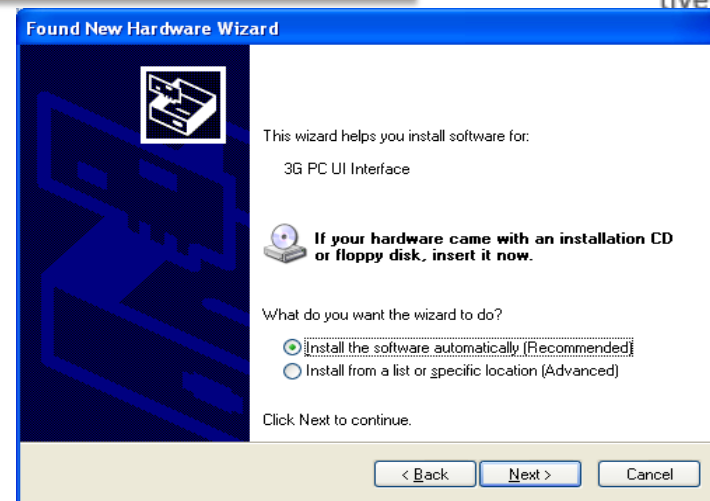
10. Setelah proses instalasi awal selesai, proses dilanjutkan dengan pendeteksian perangkat “3G Applications Interface” seperti pada tampilan

Proses Instalasi E781A



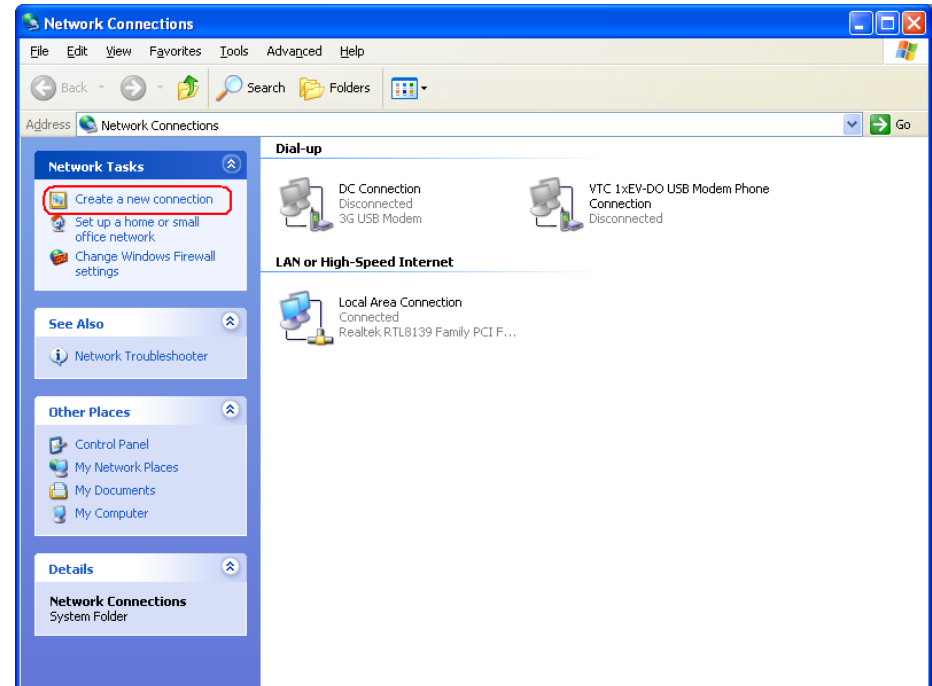
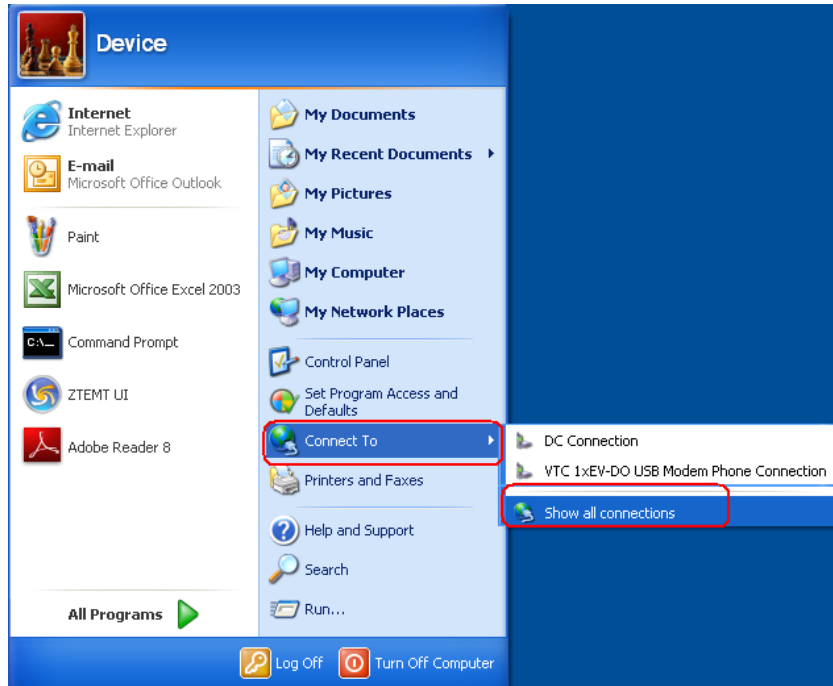
11. Setelah proses instalasi awal selesai, proses dilanjutkan dengan pendeteksian perangkat “3G NMEA Interface” seperti pada tampilan

Proses Instalasi E781A



12. Setelah proses instalasi awal selesai, proses dilanjutkan dengan pendeteksian perangkat “3G PC UI Interface” seperti pada tampilan

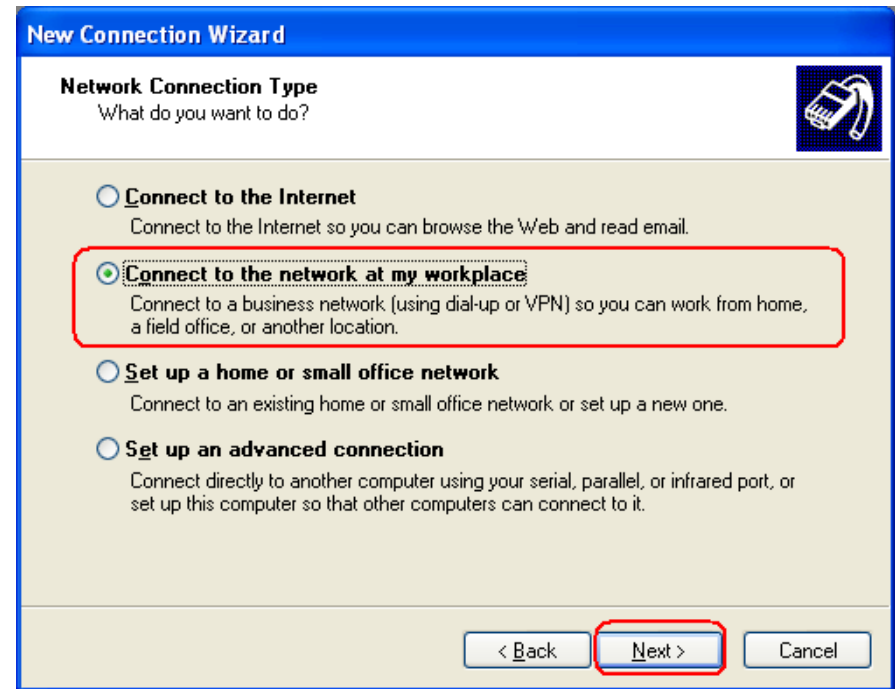
Membuat Koneksi Data



13. Untuk membuat koneksi data, masuk ke **Start Menu**, pilih **Connect To** dan Pilih **Show all connections**

14. Muncul tampilan seperti diatas, pilih **Create a new connection**

Membuat Koneksi Data



15. Muncul tampilan “**Welcome to the New Connection Wizard**”, klik Next >

16. Keluar keterangan “**Network Connection Type**”, pilih “**Connect to the network at my workplace**”. Klik Next >

Membuat Koneksi Data

New Connection Wizard

Network Connection
How do you want to connect to the network at your workplace?

Create the following connection:

Dial-up connection
Connect using a modem and a regular phone line or an Integrated Services Digital Network (ISDN) phone line.

Virtual Private Network connection
Connect to the network using a virtual private network (VPN) connection over the Internet.

< Back **Next >** Cancel

New Connection Wizard

Connection Name
Specify a name for this connection to your workplace.

Type a name for this connection in the following box.

Company Name
Smartfren E781A

For example, you could type the name of your workplace or the name of a server you will connect to.

< Back **Next >** Cancel

17. Keluar keterangan “**Network Connection**”, pilih “**Dial-up connection**”. Klik Next >
18. Keluar keterangan “**Connection Name**”, isi keterangan Company Name dengan “Smartfren E781A”. Klik Next >

Membuat Koneksi Data

New Connection Wizard

Phone Number to Dial
What is the phone number you will use to make this connection?

Type the phone number below.

Phone number:
#777

You might need to include a "1" or the area code, or both. If you are not sure you need the extra numbers, dial the phone number on your telephone. If you hear a modem sound, the number dialed is correct.

< Back **Next >** Cancel

New Connection Wizard

Completing the New Connection Wizard

You have successfully completed the steps needed to create the following connection:

Smartfren E781A

- Share with all users of this computer

The connection will be saved in the Network Connections folder.

Add a shortcut to this connection to my desktop

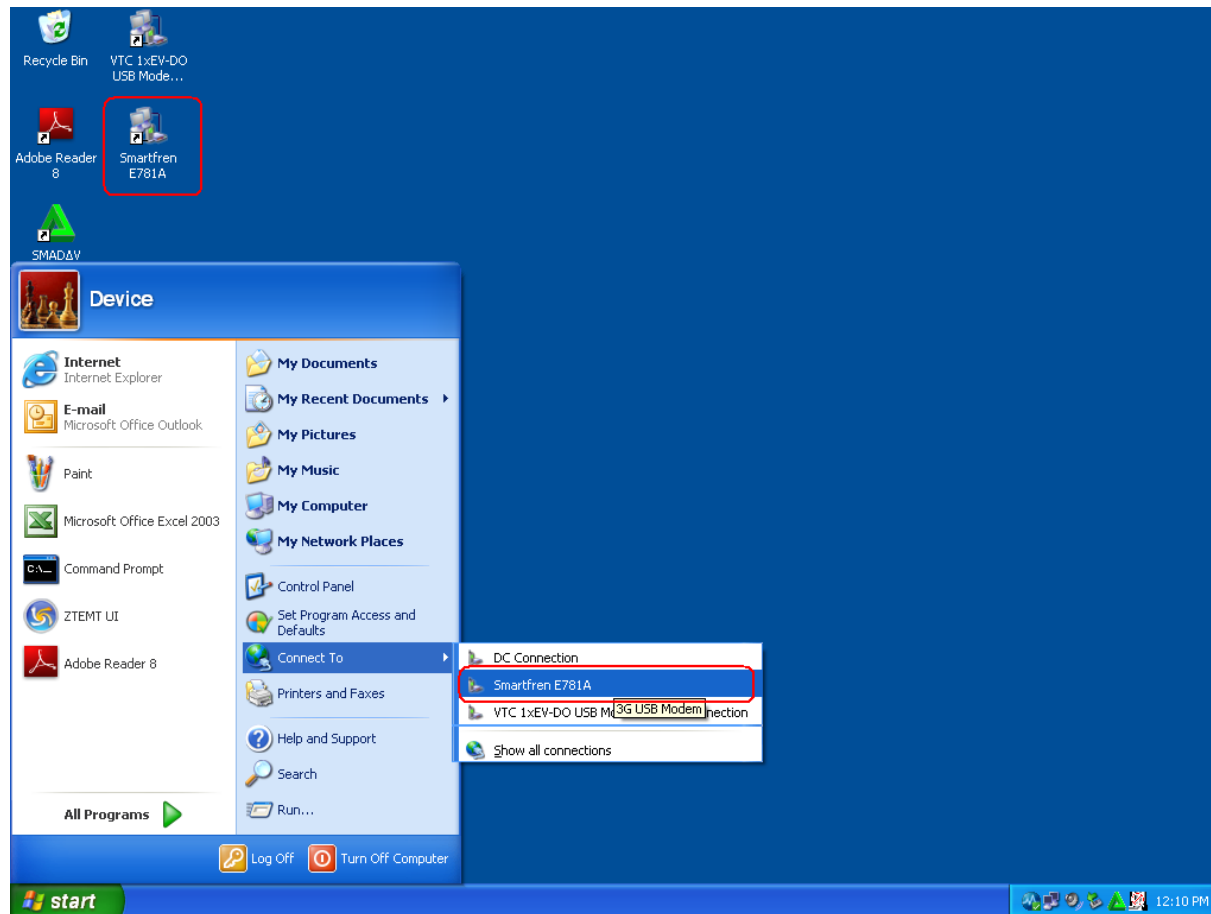
To create the connection and close this wizard, click Finish.

< Back **Finish** Cancel

19. Keluar keterangan “**Phone Number to Dial**”, isi keterangan Phone number dengan “**#777**”. Klik Next >

20. Keluar keterangan “**Completing the New Connection Wizard**”, klik Finish

Membuat Koneksi Data



21. Menu koneksi dapat di cek pada **Desktop** dan menu “**Connect To**”